

Make the world go together

# DAEGUNTECH

3D Printer Manufacture | Cable Assembly

System Control Panel | Test Equipment Manufacture

Semiconductor Manufacture Machines



DAEGUNTECH CO., LTD.



Make the world go together

DAEGUNTECH has stable function and quality for preparing the future.

## DAEGUNTECH

Based on the accumulated technologies and achieve customer satisfaction, pursue future-oriented business activities, and constantly effort for innovative technology development.



### Technical Focus

Function root experience  
culture for creative  
technology.



### Customer Satisfaction

Quality, Cost, Delivery



### Future Oriented

Vision conduct  
for preparing  
future dreams.

## Contents

History 04

CEO Greetings 05

Cable Assembly 06

Machine Tool Control Panel Assembly 10

Chip Mounter Equipment Parts 12

KAI Tester 14

3D Printer MyD Series 16

Wire-Cut EDM 18

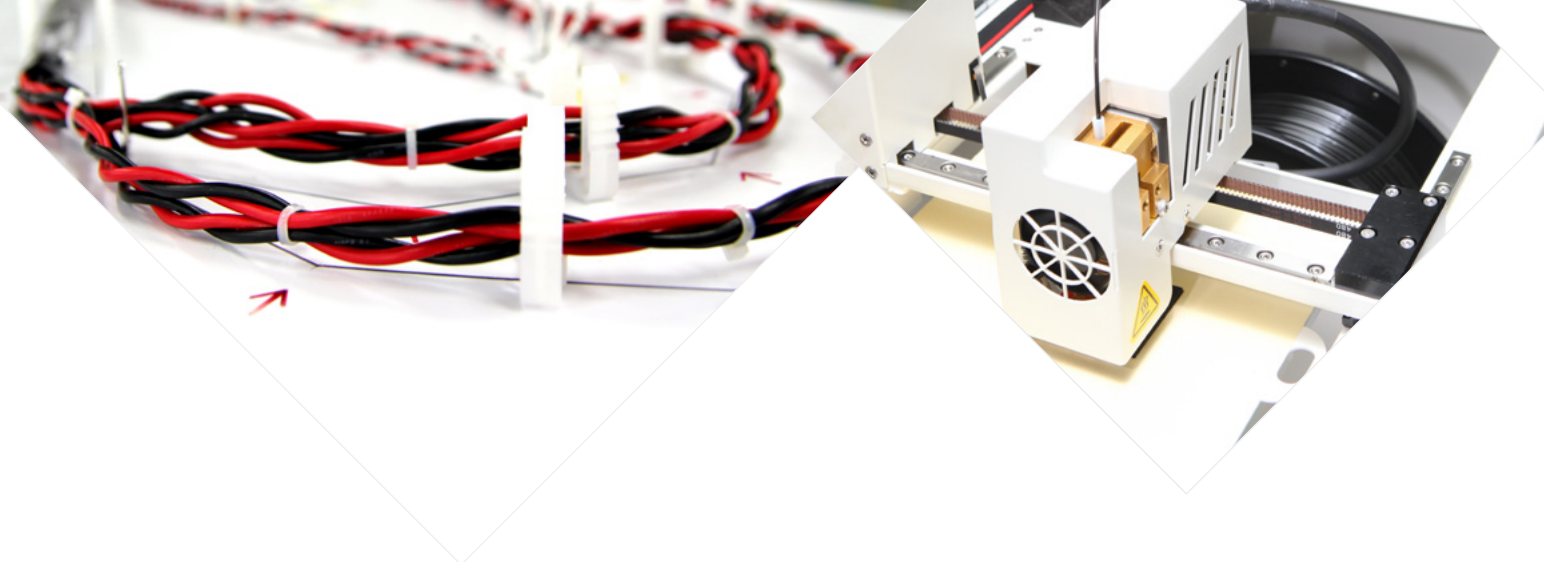


# Company History

With infinite possibilities!  
With challenge and passion!

History of DAEGUNTECH will produce the best products.

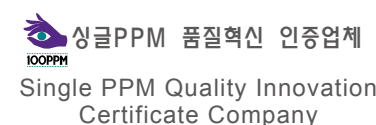
- 1998. 10 DAEGUNTECH was established
- 1999. 05 Semiconducting tools such as Cable Ass'y and Wire Harness was made and manufactured.
- 2000. 06 Test machines for military use were made
- 2003. 07 Quality Environment Management System ISO9001, ISO 14001
- 2004. 09 Made a corporate body as DAEGUNTECH CO., LTD
- 2004. 10 Started the machine tool control box business
- 2006. 11 Established the R&D team/ Obtained INNO-BIZ certificate
- 2007. 06 Certificate of venture company
- 2007. 10 Certificate of Single PPM Quality Innovation Company
- 2009. 03 Certificate of component material specialized company
- 2010. 12 Outstanding family friendly company
- 2012. 09 2012 the most wanted company to find employment
- 2013. 09 2013 the most wanted company to find employment
- 2014. 01 Manufactures and sells Wire-Cut EDM
- 2014. 03 3D Printer MyD brand was made (S140, S160)
- 2014. 12 Industrial 3D Printer was released.
- 2015. 01 Established Japan branch
- 2015. 09 Be designated as Changwon-type Hidden Champion Company (from Changwon City)
- 2016. 04 Be designated as Global Leading Company (from KICOX)
- 2016. 12 Metal 3D Printer MyD released.
- 2017. 06 Peek material 3D Printer MyD released.



Good company to work



Top company to work



ISO 9001 & ISO 14001

We consider the  
promise with  
customers as the  
best value.



10 years preceded the rapidly changing field of manufacturing expertise and technology since its founding in 1998. To keep pace with the current fields of industrial cables and hardware equipment manufacturers with strong growth.

I give thanks to all customers' support and our outstanding technology, and a variety of manufacturing experience of all employees working hard to become the best in their fields in union.

DAEGUNTECH will further invest on our technology and research and development for better and precise manufacturing to achieve and challenge for new possibilities of exporting our products around the world.

Customers' trust and management transparency, revolution and industrial equipment hardware will take us forward and please take a watch.

CEO Ki-Soo, Shin



## Cable Assembly

In order to satisfy stable performance and quality, we produce cable assembly with best technical skills and expertise.

# Cable Assembly

During 10 years, DAEGUNTECH is the leading company produces industrial cables, cable assembly, and wire harness in all sorts of big equipment (CNC, Control Panel, Wire-Cut EDM, Industrial Equipment), and tries to satisfy to customers' exacting requirement, and only the goods, which is passed the strict efficiency test, can be supplied to customers.

We are producing more stable and reliable cable assembly if you compare to other products which are distributed nowadays.



### Drive Cable

connects the PC RACK CABLE power and signal cable.



### Pump Cable

is connected with the Coolant, and makes cable connect easier for the labeled cables.



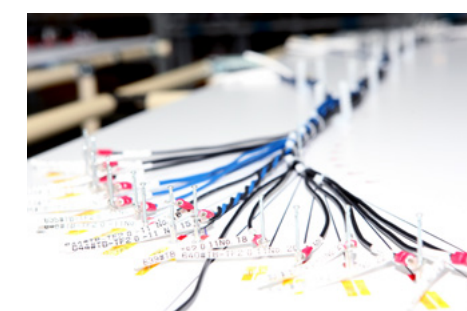
### Power Cable

supplies power to the control panel.



### Docking Cable

connects to the sensor cable.



### Jigged Up Cable Production

Transfers the blueprint in a plate and helps the production by preventing 'Human Error' and protects the quality as a 'Fool Proof' set-up.





| Machine  
Tool Cable



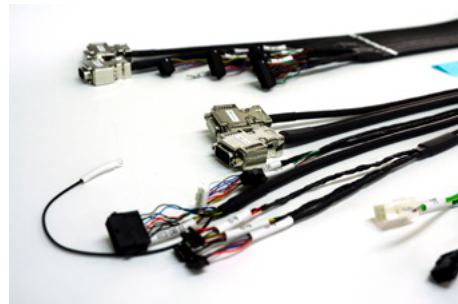
**Sensor Cable**  
SENSOR CABLE ASS'Y

A proximity sensor connected to a connector used for various purposes

# Cable Assembly

## Cable Assembly

### | Industrial Cable



**FLAT Cable**  
Flexible Flat Cable

High speed moving cable for Industrial and Robot medical equipments



**FLYING Camera Cable**  
Connect the camera equipment head portion and flow cables to Left FLAT CABLE, TOP BRACKET FLY\_CAM, and RIGHT CAMER I/O B/D



**Compound Power Cable**  
MAIN POWER SUPPLY CABLE ASS'Y

A power cable with 220V, 380V, and 440V connected with the electric control box.

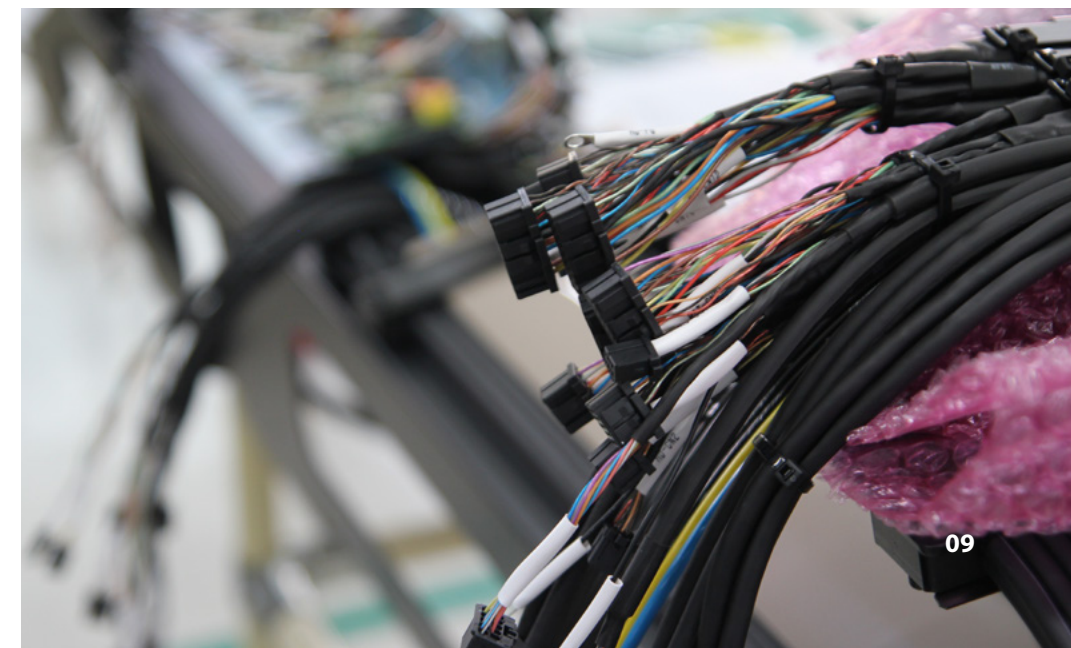


**Link Cable**  
NC SYSTEM I/O LINK CABLE

The numerical control system and which is responsible for input and output used to connect the output of the cable system for various modifications to the cable available.



**OP PANEL ASS'Y**  
Connects the Control Box (OP PANEL) with the controller





## Machine tool Control box Assembly

Started at 2004, it was able to be one of the major businesses of the company. Producing all of the large panels and small control box of the machine tools.

# Machine Tool Control Panel Assembly

We always prepare Test Bench Program to satisfy customers' demand, and construct customers' order production. Currently, produce Turning Center purpose control enclosure of PUMA series, next generation multi control enclosure unit, and Swiss Turn Turning Center purpose of ST 20G series.

## Product Introduction

### Compact Complex Turning Machining Center Control Box

Applied in a compact complex machine tool.

### Large Complex Machining Turning Center Control Box

Applied in a large complex machine tool.

### Operating Panel Box

Applied in most of the machine tools.

### Compact Turning Center Control Box

Applied in a compact machine tool.

### Test Bench

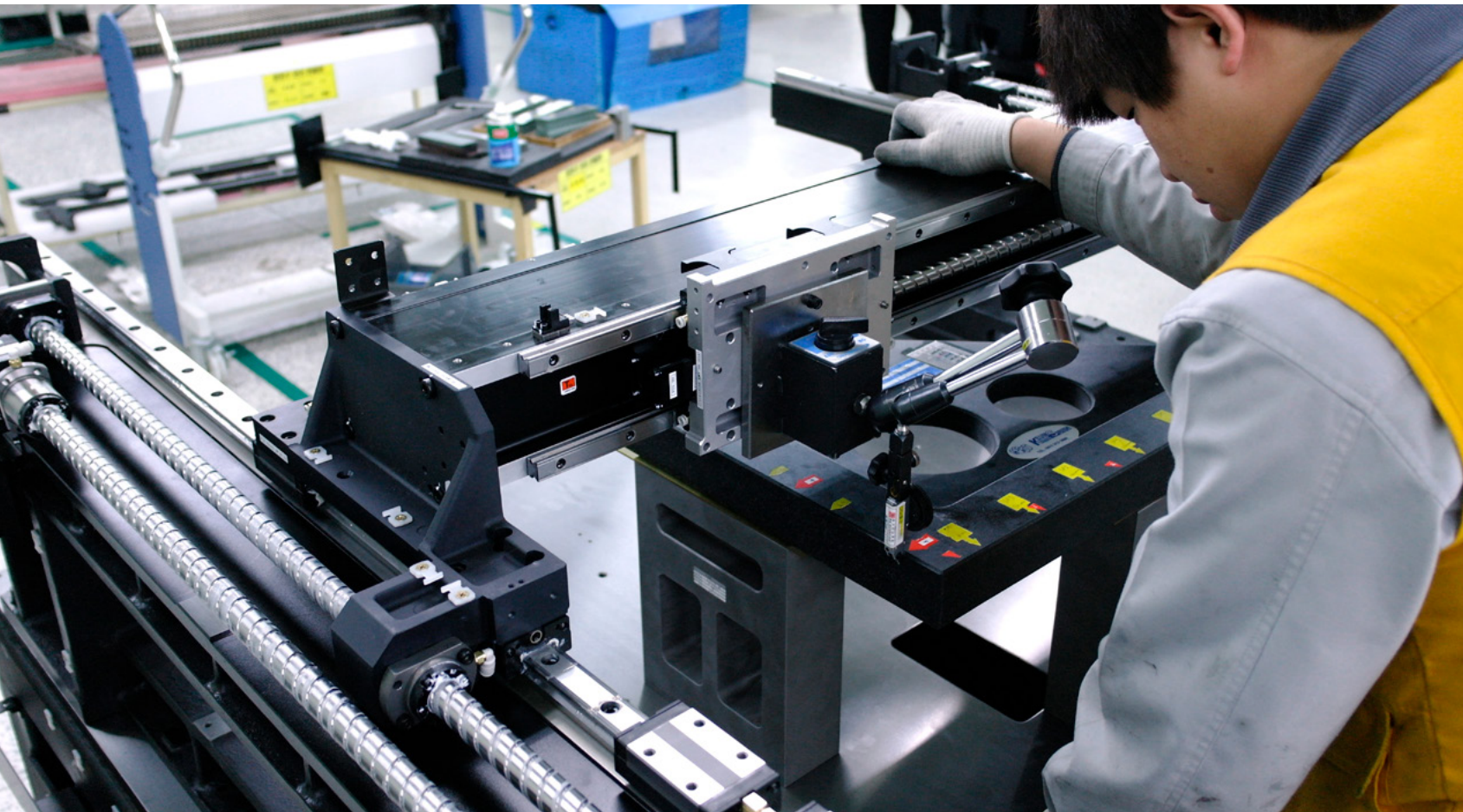
Machine tool control box test equipment during shipment inspection 1:1 to quality assurance checks reliability test equipment design and production

## Equipment performance

- 2009: Produced 546 machine tool control box
- 2010: Produced 1244 machine tool control box
- 2011: Produced 1558 machine tool control box
- 2012: Produced 2766 machine tool control box
- 2013: Produced 976 machine tool control box
- 2014: Produced 1357 machine tool control box
- 2015: Produced 1471 machine tool control box







## Chip Mounter

Since 2010, DAEGUNTECH constructs the best setting for industrial equipment (Chip Mounter, next generation Chip Mounter for LED only, and Screen Printer) and BIO/Medical equipment.

# Chip Mounter Equipment Parts

Currently, DAEGUN strongly grows up in order to produce 80 Chip Mounter (SCM1, SM411, SM411F, SM421, SM431, SM431L, SM451, SM471, SM481) and Screen Printer (SP1, SMP400S) monthly. For the future, we promise to supply precision and stable equipment to customers with technique improvement and effort.

## Equipment Introduction

### Compact High Performance Screen Printer

High-performance products with a small screen, the convenience of the user to the printer to print a variety of PCB.

### High Speed Modular Mounter

EXCEN has 16-nozzle high-speed rotary heads for high-speed modular mounter as applied in its class as the world's highest rate of 120,000 CPH and product implementation of the world's most productive area.

### Amazing LED Production System

Use: One Feeder simultaneous pickup Solution implemented the world's first LED dedicated mounter SLM100 Series! LED provides optimal production system.

## Equipment Performance Industrial Equipment (Since year 2009)

- 2009: Complete manufacturing system of Chip Mounter
- 2010: Produced about 400 Chip Mounters
- 2011: Produced about 750 Chip Mounters
- 2012: Produced about 1000 Chip Mounters
- 2013: Produced about 1100 Chip Mounters
- 2014: Produced about 1000 Chip Mounters
- 2015: Produced about 950 Chip Mounters





## KAI Test tools

We produce test equipments for aircrafts to contribute to the Korean army which does not allow even a slight mistake.

# KAI Tester

We produce exclusive test equipment such as Breakout Box, Portable-Aircraft Relays, Test Equipment for Hydraulic System, and Rotor Defroster Terrestrial Function Test Utilization Equipment for supersonic high trainer T-50, basic trainer KT-1, and localized maneuver helicopter KUH-Surion.



### HFSOV Lamp Test Box

It checks the operating signal line to check operating system through the Central Managing Panel(CMP)'s electric connector, and the status of the lamp to check.



### Special Cables of Defense

Headset microphone connecting cable assembly



### OTC System Rack

SIL export ver. / OTC system rack for avionics integration testing.



### Tester, Portable-Aircraft Relays

Portable machine which can check faults of the Relay, Timer Delay, Diode, and Resister Modules



## Equipment Introduction

•**2009** Advanced trainer T-50 development of electronic equipment, KUH Korean type helicopter test equipment's localization and so on with other electronic equipment orders and conditions for the supply of 10 new generation of aircraft development.

•**2010** Breakout Box, PCM Breakout Box, Relay Power Cable, Cable Assembly, including 14 cases of other electronic equipment and cables on the next generation of aircraft orders and supplier development

•**2011** FA-50 Breakout box, Autopilot SERVO B/O Box, Calibration Cable, KC-100 FTI Bench TEST Landing Gear Simulator, HUD Alignment Jig, KUH Emergency Pump Checking Equipment with 15 cases of orders and supplies for electrical equipment and cable production.

•**2012** FA-50 Data Link Breakout Box, Intercom Extension Cord, OTC, Business Purpose OTC for the National Police Agency (NPA) helicopter, SIL of the NPA, Target System Cables, Supporting Equipment (Relay, wing, PDU, RF delay), and localize the export equipment with 17 orders of electrical equipments and cable assemblies for the next generation of aircraft development

•**2013** Data Link Ground Station, Fault Isolation Extension Cable SET, Radar Test Bench Integration management wreck, PA AMP Break Out BOX, Extension Cord For Ground Crew, KT-1P STE OTC with 15 orders and supplies for localized technology and electronic equipment manufacturing

•**2014** Purchasing GPS distributor and cable producing, Breakout Box SET, ECS BPR/ FPRSOV, TOOL, CONTROL STICK ASSY, MIDS Integrated Control Unit besides 3 cases Moa Switch Tester, NEOS SIL OTC making, HF AM radio BREAKOUT BOX, Landing Helicopters and Avionics SIL with 10 orders of cable assembly

•**2015** Obtain order and supply for FA-50AHB MIDS/ IFF CONSOLE, Compact Operator Test Console, Operating Test Console RACK, FTI Bench Test, Breakout Box, PDU & Asymmetry Brake (LEFAS), Fault Isolation Breakout Box, Mux Bus Termination Panel, Relay Matrix Board, IMDC Breakout Box, DATA LINK Breakout Box, Wing Fuel Tank Pressure Test Kit with 10 orders of cable assembly



## 3D Printer

Saving money with more precision!

You can simply realize various ideas from family, schools, and office.

# 3D Printer MyD Series

The 3D printer MyD is using FDM method which is melting plastic like substances and laminating it level by level which gives comfort and low expends for the customers.

- ⦿ L/M guides and step motors give precision and safety
- ⦿ Strong metal frame and cover for shock resistance stable printing is available
- ⦿ Detachable bed for easier removal of the output
- ⦿ Able to use various filaments such as PLA, ABS, TPU, PVA, and Nylon



### MyD POP

A KIT product, the user should build it and printout. It is used using a Bluetooth and application.

### MyD S140

The bed is detachable which makes the printout easy to remove. To Use the L/M guides and step motors increases the quality of the printout. The exterior of product is made of compact steel which makes it very durable.



### MyD S160

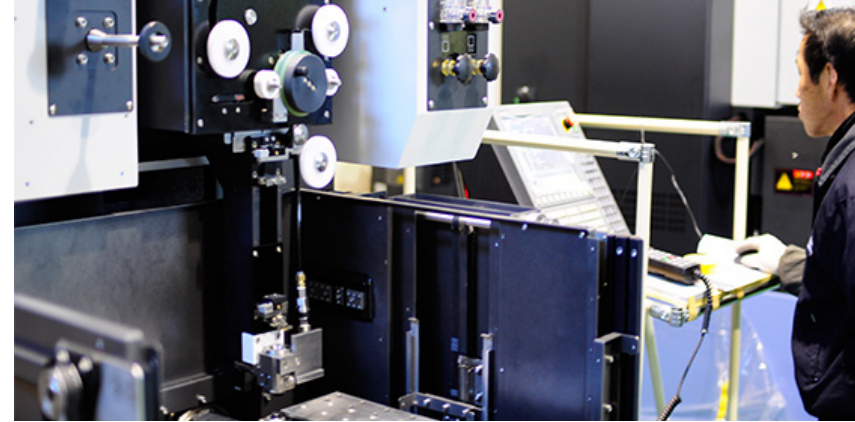
For considering the convenience of the user, auto leveling with heated bed improve the quality of printouts to apply its performance.



### MyD P250A

It has dual head applied and easy to remove support. Also, applying three-axis ball screw parts makes more precise outputs.





**Wire-Cut EDM** We have the facility to produce 100 high precision deposition type EDM per year.

## Wire-Cut Electrical Discharge Machine

Producing high precise EDM with the best professional technical skills. High precision deposition Wire-Cut EDM is accurate and precise when doing the punch and dye production, special shape production, taper production, and laminate production which allows not only high precision and excellent function, but also revolutionary for the roughness



### NW 570 II Small deposition type Wire EDM

- Mounted with standard electrical heating AWT (automatic wire threading)
- Implemented ultra-precision processing with mounted linear scale (X / Y axes)
- Improved durability with electrolytic corrosion prevention through the AC power supply
- Implemented maximum Ra 0.22  $\mu\text{m}$  with standard surface roughness improvement circuit attached



### NW 800 II Medium deposit type Wire EDM

- Secured strength with a single structure combined table and bed
- Achieved convenient operation through column movement, even though they are medium and large in size
- Maintain stable strength in all areas with simultaneous control of X, U, Y, and V axes
- Secured basic performance for surface roughness, and improved rough machining speed significantly



### NW1100 Large deposit type Wire EDM

- Optimized design for large press metal stamping
- Provide convenient operation with X-axis table movement, even though it is large
- Adopted automatic door to the height of front material
- Secured basic performance for surface roughness, and improved rough machining speed significantly







Make the world go together

**DAEGUNTECH**



**Headquarter(1st Plant)**

138, Sahwaro, Uichang-gu, Changwon-City, Gyeongsangnam-do, KOREA

**t** 055.250.8000 **f** 055.294.5527

**2nd Plant**

68th Street 17, Jukjeon-ro, Uichang-gu, Changwon-City, Gyeongsangnam-do, KOREA

**t** 055.250.8052 **f** 055.294.5527